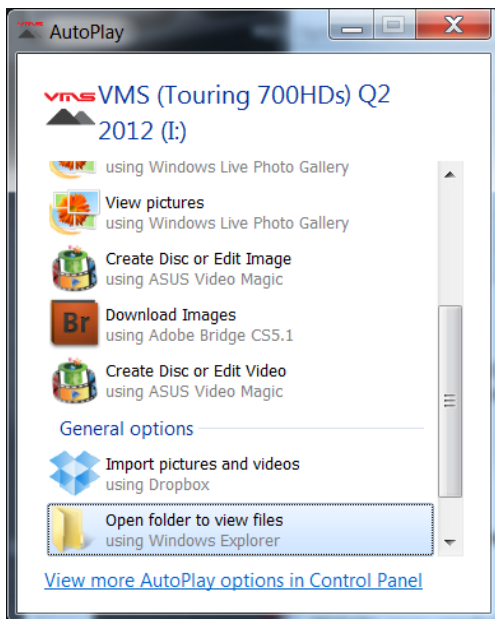
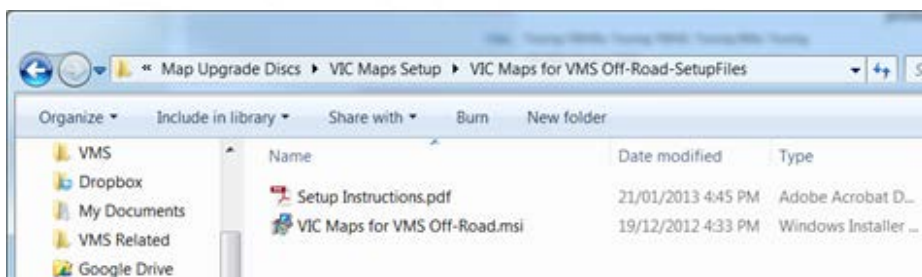


Connect Touring VMS GPS unit using the USB cable to your computer (You may have to select USB mode on the Navigation device).

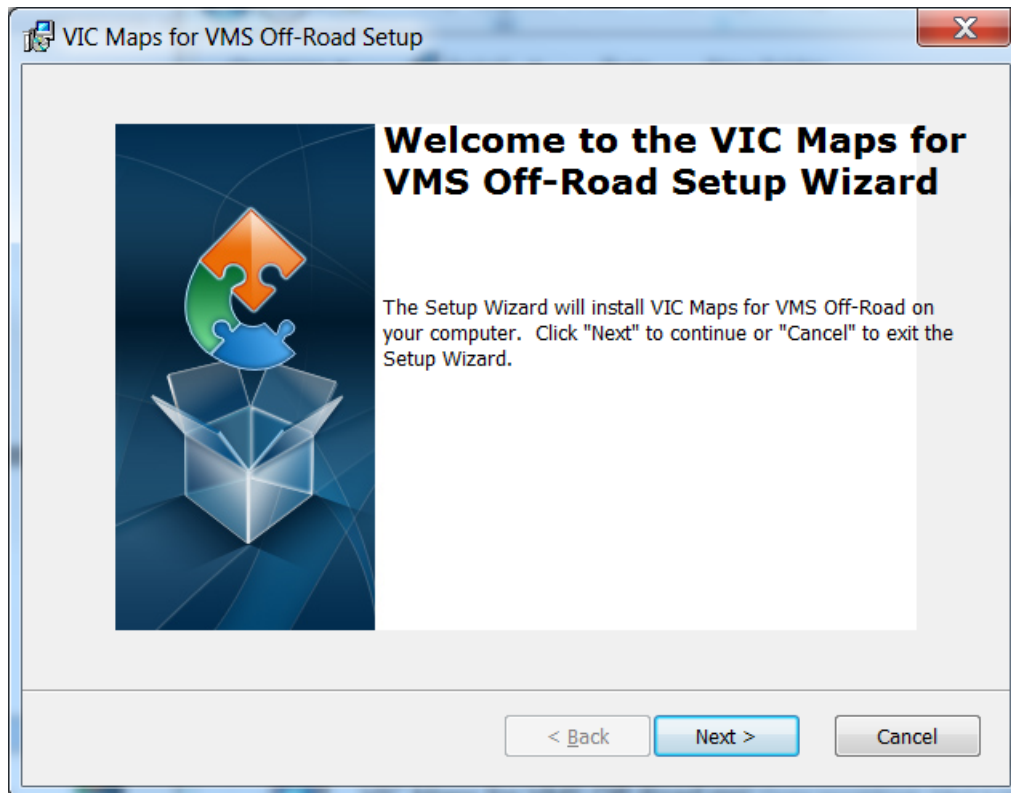
1. A dialog box will appear, once your computer recognises the device, two drives will appear. Take notice of the letter of the drive which is labelled "VMS" (eg. A:\ B:\ D:\ or F:\ etc.)



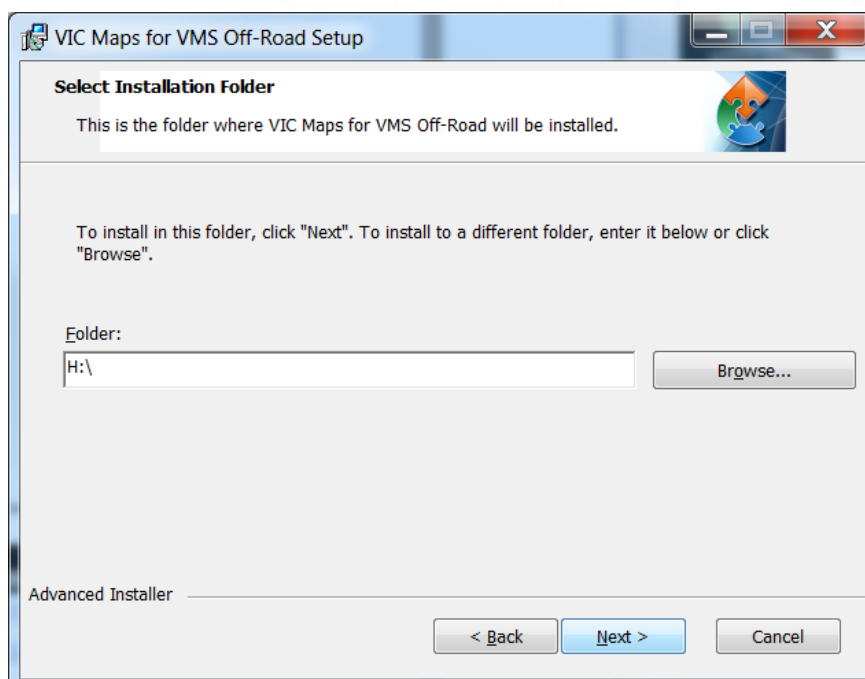
2. Close that window now, and open the Setup File once downloaded.



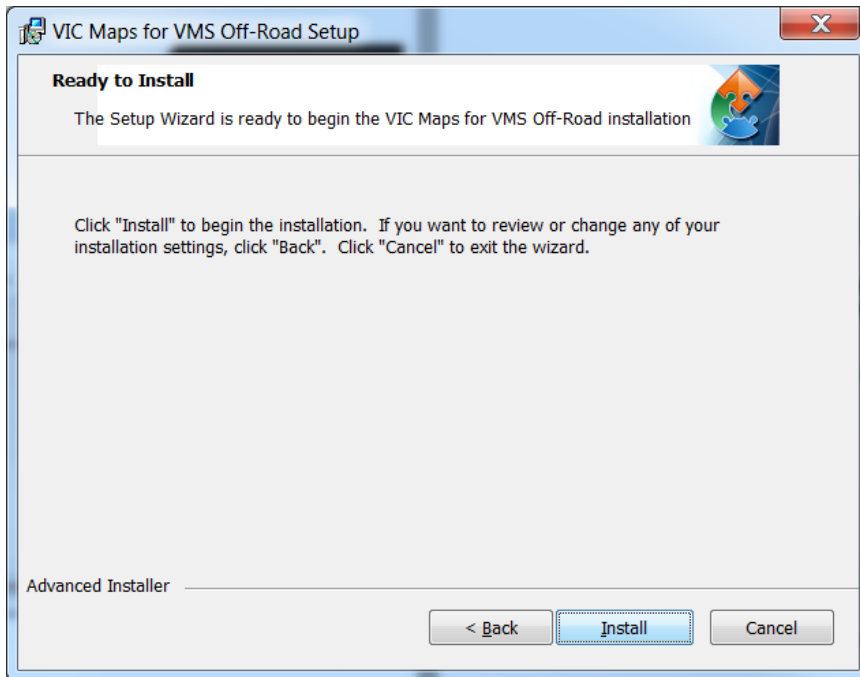
3. Click next to begin the update.



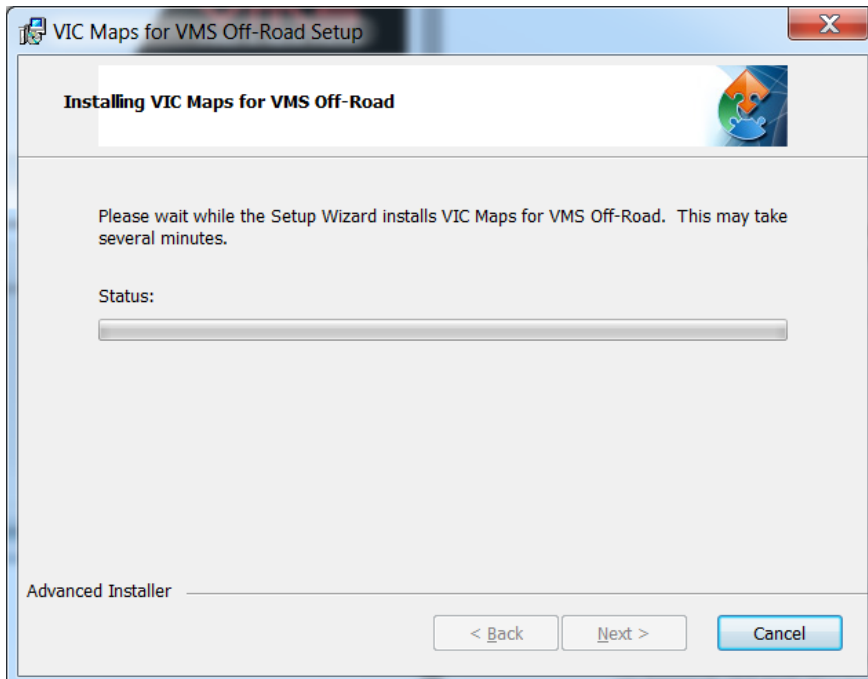
4. Type the letter of the drive that your computer recognised the VMS device as (This will vary on different computers and may even vary each time you reconnect the device), and then Click Next.



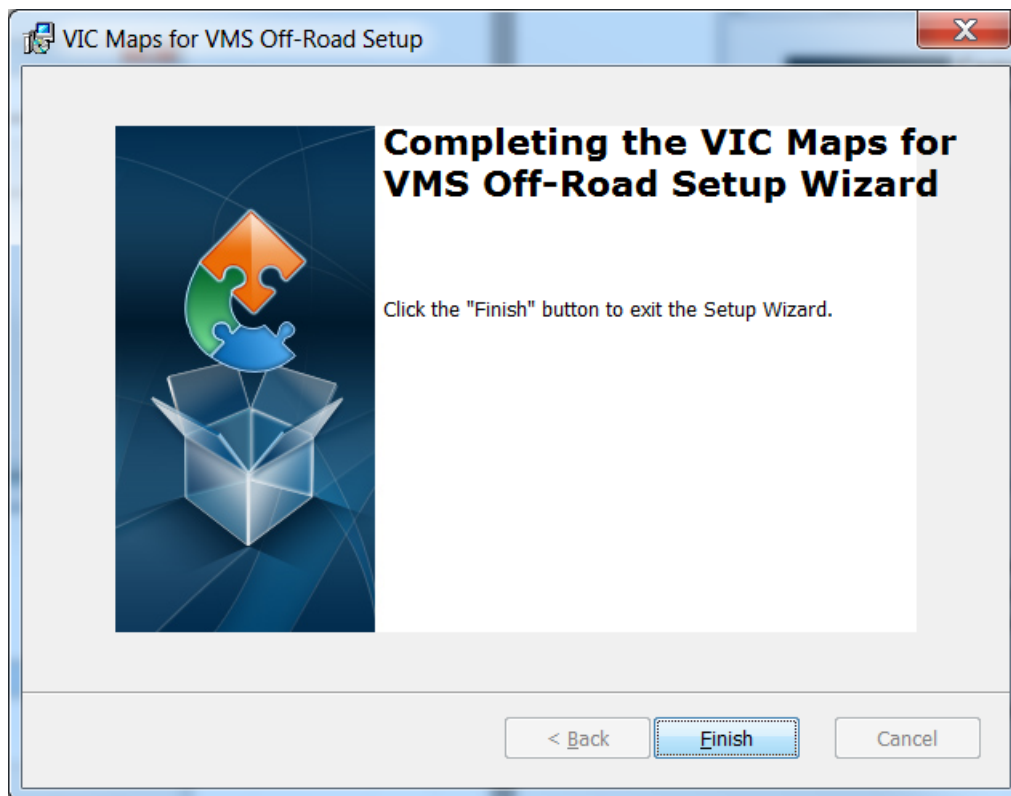
5. Click Install



6. The software update will now begin.



7. Once software update is complete, click Finish to close the program.

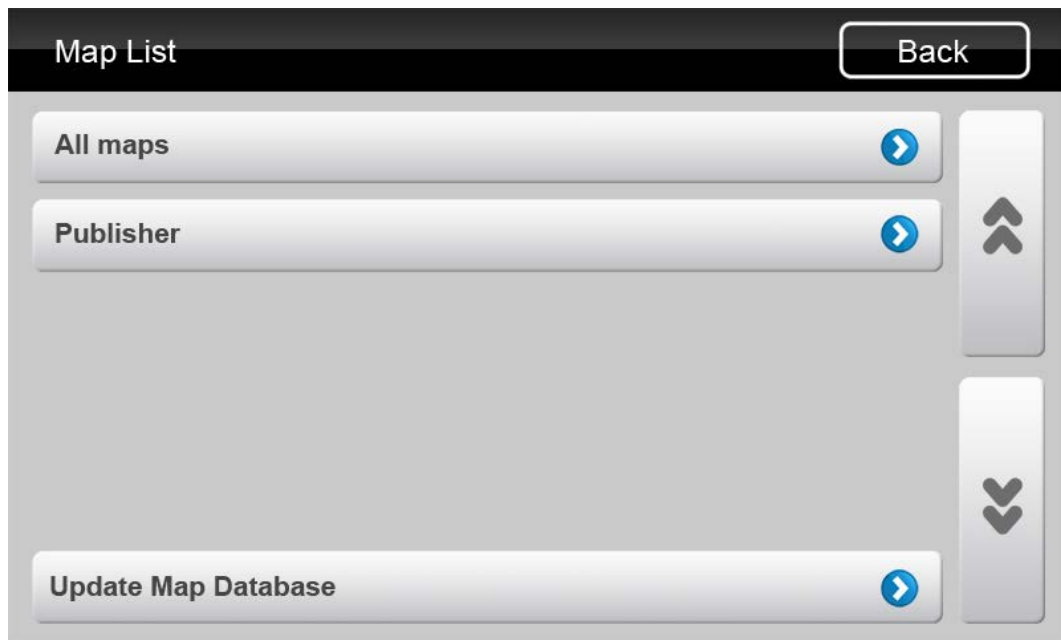


8. The first time you load VMS Off-Road it may take slightly longer than normal. Please wait. If you happen to click application twice it will open the application twice and generate an error saying "Cannot connect to GPS receiver." This is as both copies fight to use the same GPS receiver.

Please close error, and exit one copy of the software. (Unit may require a restart if this error occurs).

9. For VMS Off-Road 3.02 users only (Not for earlier versions):

Once the software is loaded for the first time, make sure to update your map library by clicking Menu, Map List, and Update Map Database. This process can take from 30 seconds to 15 minutes depending on how many maps you may have.



10. You are now ready to start using your new maps!